

# MATERIAL HANDLER



## Specifications

Operating Weight	70,548 - 78,264 lbs
Engine Output	198 hp
Reach	Up to 52.5 ft

## Features

- An operating weight up to 78,264 lbs, 52.5 ft maximum reach and 15.8 ft undercarriage width between stabilizers provides stability and performance during working cycles.
- A powerful 198 hp turbo diesel engine and high performance dual-circuit hydraulic system allows loading and unloading with speed and precision.
- The multi-function color monitor displays at-a-glance important operating data; the layout of the controls is convenient and user-friendly.
- The adjustable comfort seat, hydraulically elevating cab and ergonomic controls help the operator maintain complete command of the situation, even on the busiest of days.

**WORKS FOR YOU.™**

# SPECIFICATIONS

## Engine

Manufacturer, mode	Deutz TCD 2013 L06 2V
Design	6-cylinder inline
Engine control	EMR III
Type	4-stroke diesel, common rail direct injection, turbocharged with charge air cooling
Engine output	198 hp
Nominal speed	2000 rpm
Displacement	439.4 in <sup>3</sup>
Cooling system	Liquid intercooling with temperature-controlled fan speed
Emission standards	EPA Tier III and COM III
Air filter design	Two-stage filter
Fuel tank capacity	101 US gal

## Electrical System

Operating voltage	24 V
Batteries	2 x 12 V / 100 Ah / 760 A (in accordance with EN)
Lighting set	1 x H3 floodlight on upper carriage, 1 x H3 floodlight on cab floor, turn signal and rear side-marker lamps
Generator	20 kW DC generator with control, driven by V-belt direct from diesel engine

## Travel Drive

Hydrostatic drive through infinitely variable axial piston motor with directly mounted travel brake valves, two-speed shift gear, all-wheel drive

Travel speed		
	1 <sup>st</sup> gear	3.1 mph
	2 <sup>nd</sup> gear	12.4 mph
Gradeability		Maximum 45%
Turning radius		28.5 ft

## Swing System

Ring gear	Internally toothed ball ring gear (double row)
Drive	3-stage planetary gear with integrated multi-disc brake
Upper carriage swing speed	Infinitely variable from 0 - 8 rpm
Pivot brake	Electrically operated

## Undercarriage

Front Axle	Planetary drive axle with integrated drum brake, rigidly mounted, max. steering angle 27°
Rear Axle	Oscillating planetary drive rear axle with integrated drum brake and selectable oscillating axle lock
Stabilizers	4-point stabilizers
Tires	Solid rubber, elastic, 8-fold 12.00 - 20



## Brake System

Service Brake	Hydraulic single-circuit braking system acting on all four wheel pairs
Parking Brake	Electrically operated disc brake at transmission, acting on both front and rear axle

## Hydraulic System

LINDE mobile hydraulic system with load limit control and fuel-saving power demand control. Separate oil cooler, temperature-controlled fan speed. Filter elements integrated in the oil tank; maintenance interval: up to 3,000 operating hours. Central lubrication system.

Max. Pump capacity	2 x 84.5 US gal/min
Max. Operating pressure	4,641/5,221 psi
Hydraulic oil tank	102.8 US gal

## Operator's Cab

Elastically supported, variable hydraulically height-adjustable with max. eye level of 19 ft. Large windows for optimum all-around view, windshield with pull-down sunblind that slides under cab roof, visibility panel in cab roof, sliding window in cab door, steering column height and tilt adjustable.

Heating: Infinitely variable hot water heating with 3-speed fan, 4 adjustable defroster nozzles.

**Operator's seat:** Air-cushioned comfort-seat with integrated headrest, safety belt and lumbar support, seat heating with integrated a/c function optional. Seat position, seat inclination and seat cushion multi-adjustable in relation to position of armrests and pilot control units, allowing low fatigue operation.

**Monitoring:** Ergonomic instrument layout, glare-free. Function monitoring; automatic monitoring, warning and storage of deviating operating conditions, e.g. filter pressure with warning indicator and shutdown of pilot controls, warning indicator or shutdown of pilot controls if hydraulic oil temperature limits are exceeded. Diagnosis of individual sensors possible via the multi-function display.

Air conditioning	Automatic
Sound power level (guaranteed) in accordance with guideline 2000/14 EC $L_{W(A)} = 102$ dB(A) required under 2000/14 EG = 104 dB(A)	

## Safety Installations

For crane operations in accordance with EN 474-5.

Cab protection by close proximity range limiter.

## Official Homologation

Certification in accordance with CE regulations.

# EQUIPMENT

# MHL350 D

## Engine

### Series Option

Exhaust gas turbocharger	●
Intercooling	●
Direct electronic fuel injection/ Common Rail	●
Automatic idle	●
Interface for engine diagnosis	●
Temperature-controlled fan drive	●

## Undercarriage

### Series Option

2-speed power-shift transmission	●
4-point stabilizers	●
4-point stabilizers, individually controllable	●
Stabilizer cylinders with integrated two-way check valves	●
All-wheel drive with differential	●
Piston rod protection on stabilizer cylinders	●
Stabilizer plates 16.9 x 23.6 in	●
Rear axle oscillating lock	●
Blade in addition to 4-point stabilizers	●
Special paint	●
Drum brakes	●
Tool box	●

## Uppercarriage

### Series Option

Electric refuelling pump	●
Lighting protection	●
Maintenance hood, actuated by gas strut	●
Lockable cleaning access openings on radiators	●
Separate radiator system for ambient temperatures up to 122° F (50° C )	●
Separate oil cooler with temperature controlled fan drive	●
Automatic central lubrication system	●
Special paint	●



## Cab

### Series Option

Lift-up skylight in cabin roof	●
Document clip	●
Air cushioned operator's seat with headrest, safety belt and lumbar support	●
FOPS protective grating (roof)	●
Front/roof protective grating	●
Hinged front windshield	●
LEXAN front window glass	●
High strength glass, front and top	●
Cab elevation system	●
Automatic air conditioning system	●
Steering column, height and tilt adjustable	●
Multi-function color display	●
Fire extinguisher, dry powder	●
Radio / CD player	●
Rotating beacon	●
Sliding window in cab door	●
Safety glass	●
Seat heating with integrated a/c function	●
Windscreen washer system	●
Dust protection system	●
Pressurized cabin system	●

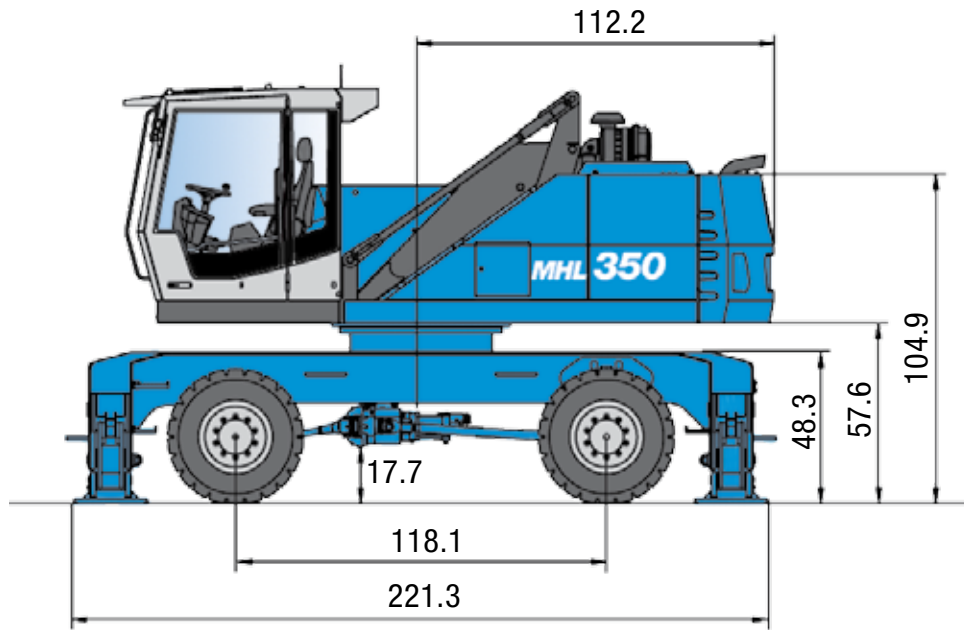
## Equipment

### Series Option

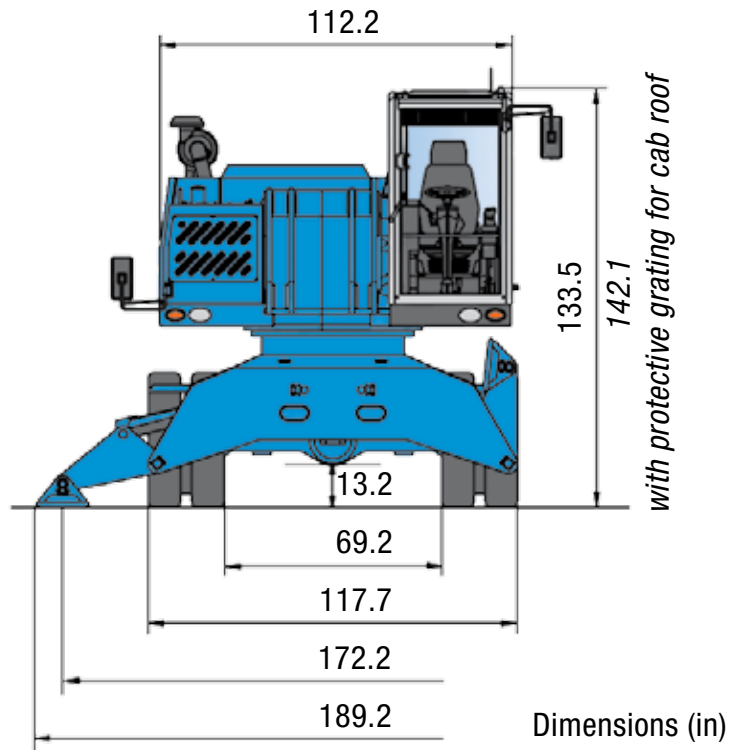
Floodlights attached to cab floor	●
Floodlights, mounted to superstructure	●
Floodlight, stick mounted left	●
Close proximity range limiter for stick	●
Coolant and hydraulic oil level monitoring system	●
Hose rupture protection for lifting cylinders	●
Hose rupture protection for stick cylinders	●
Stick shock protection	●
Lubrication of the grab suspension by central lubrication system	●
Overload protection / shutdown	●
XENON floodlight on stick	●
XENON floodlight on superstructure	●
XENON floodlight on cab roof	●
Filter system for attachments	●

**WORKS FOR YOU.™**

# DIMENSIONS



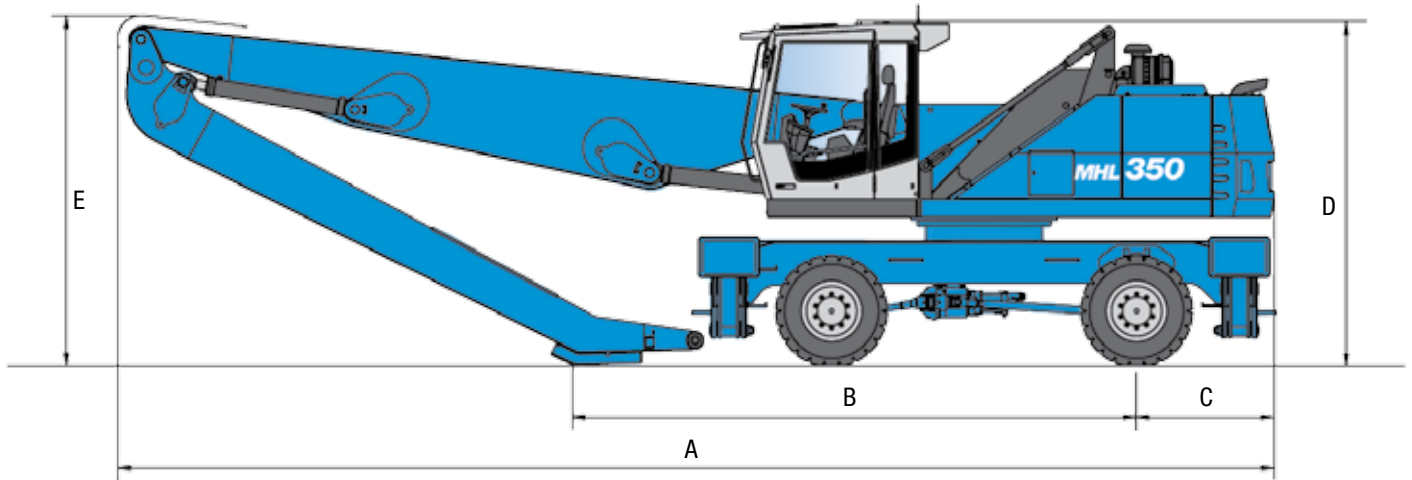
Dimensions (in)



Dimensions (in)

# TRANSPORT DIMENSIONS

# MHL350 D



Dimensions	Reach 45.9 ft	Reach 49.2 ft	Reach 52.5 ft
A	447.8 in	496.5 in	494.7 in
B	215.2 in	253.7 in	220.7 in
C	53.1 in	53.1 in	53.1 in
D	133.5 in/142.1 in*	133.5 in/142.1 in*	133.5 in/142.1 in*
E	135.6 in	118.9 in	141.7 in

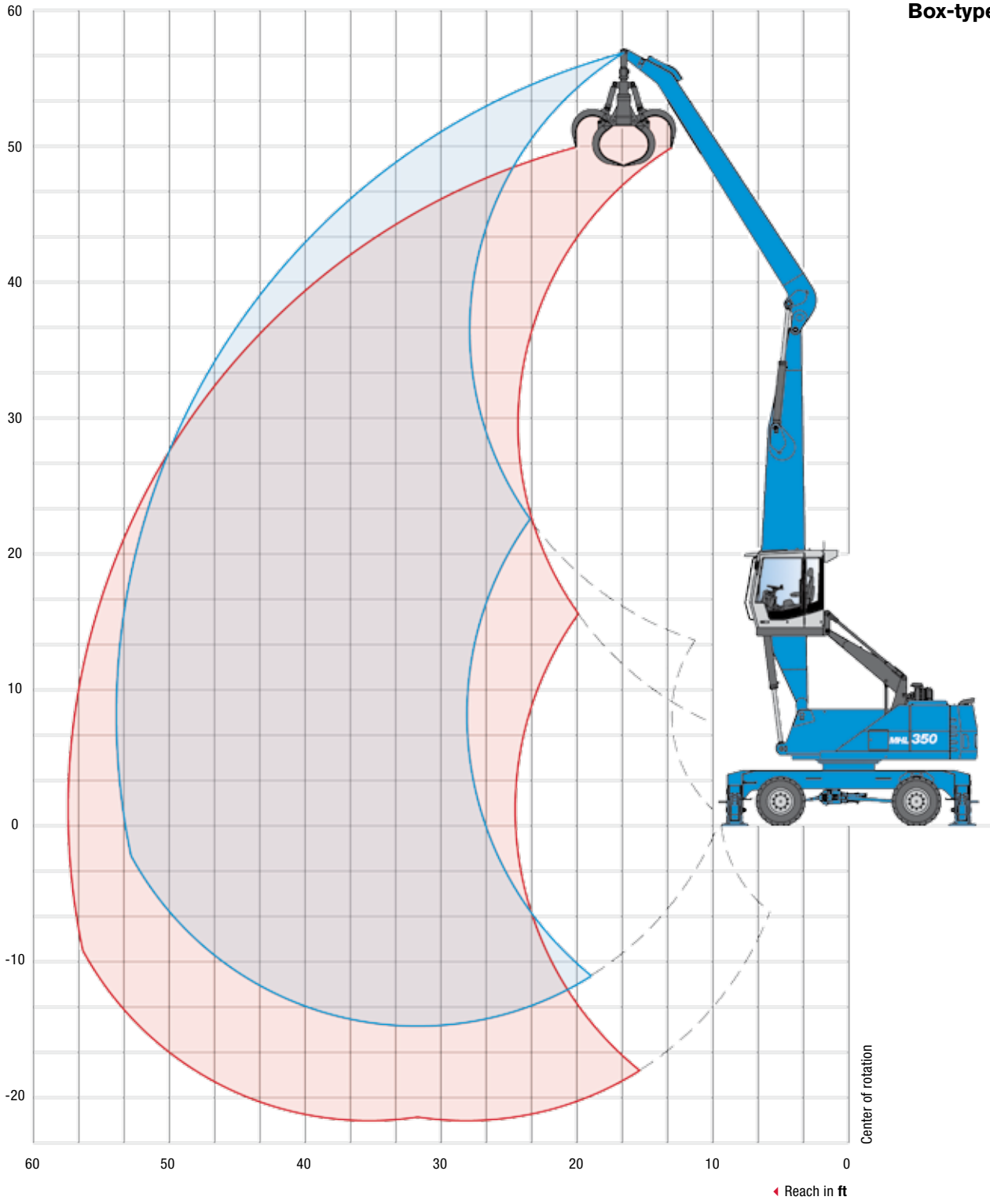
\* with protective grating for cab roof

# WORKS FOR YOU.™

# WORKING RANGES/LIFTING CAPACITIES

**Reach 52.5 ft**

**Work equipment:**  
Box-type boom 27.9 ft  
Stick 23.6 ft  
Cactus grab



# WORKING RANGES/LIFTING CAPACITIES

# MHL350 D

HEIGHT ft	UNDERCARRIAGE STABILIZERS	REACH ft							
		15	20	25	30	35	40	45	50
55	non supported		(9,360*)						
	4-pt. supported		9,360* (9,360*)						
50	non supported			(10,310*)	(7,380*)				
	4-pt. supported			10,310* (10,310*)	7,380* (7,380*)				
45	non supported				(10,380*)	(7,720*)			
	4-pt. supported				10,380* (10,380*)	7,720* (7,720*)			
40	non supported				(11,940*)	(9,620)	(7,230*)		
	4-pt. supported				11,940* (11,940*)	10,150* (10,150*)	7,230* (7,230*)		
35	non supported				(12,670)	(9,660)	(7,520)	(5,830*)	
	4-pt. supported				13,110* (13,110*)	11,770* (11,770*)	9,570* (9,570*)	5,830* (5,830*)	
30	non supported				(12,500)	(9,550)	(7,470)	(5,910)	
	4-pt. supported				13,810* (13,810*)	12,410* (12,410*)	11,250* (11,250*)	8,290* (8,290*)	
25	non supported			(16,040*)	(12,140)	(9,310)	(7,320)	(5,840)	(4,670)
	4-pt. supported			16,040* (16,040*)	14,250* (14,250*)	12,660* (12,660*)	11,370* (11,370*)	9,500 (10,100*)	6,330* (6,330*)
20	non supported			(15,680)	(11,610)	(8,950)	(7,080)	(5,690)	(4,610)
	4-pt. supported			17,370* (17,370*)	14,890* (14,890*)	13,030* (13,030*)	11,390 (11,560*)	9,350 (10,330*)	7,790 (8,360*)
15	non supported	(22,280*)	(20,840)	(14,610)	(10,930)	(8,500)	(6,780)	(5,500)	(4,510)
	4-pt. supported	22,280* (22,280*)	23,410* (23,410*)	18,730* (18,730*)	15,650* (15,650*)	13,460* (13,460*)	11,080 (11,770*)	9,150 (10,390*)	7,680 (9,120*)
10	non supported	(28,740)	(18,620)	(13,380)	(10,180)	(8,020)	(6,460)	(5,300)	(4,390)
	4-pt. supported	37,430* (37,430*)	26,000* (26,000*)	20,050* (20,050*)	16,370* (16,370*)	13,180 (13,830*)	10,730 (11,930*)	8,930 (10,390*)	7,550 (8,980*)
5	non supported	(11,850*)	(16,590)	(12,220)	(9,450)	(7,540)	(6,150)	(5,090)	(4,270)
	4-pt. supported	11,850* (11,850*)	27,660* (27,660*)	20,850* (20,850*)	15,906 (16,840*)	12,670 (14,040*)	10,400 (11,950*)	8,710 (10,260*)	7,420 (8,700*)
0	non supported	(8,450*)	(15,210)	(11,320)	(8,850)	(7,140)	(5,880)	(4,920)	(4,180)
	4-pt. supported	8,450* (8,450*)	20,370* (20,370*)	19,830 (21,060*)	15,240 (16,860*)	12,240 (13,940*)	10,110 (11,740*)	8,530 (9,920*)	7,320 (8,170*)
-5	non supported	(8,610*)	(14,490)	(10,740)	(8,430)	(6,840)	(5,680)	(4,800)	(4,130)
	4-pt. supported	8,610* (8,610*)	15,840* (15,840*)	19,180 (20,230*)	14,780 (16,280*)	11,920 (13,410*)	9,890 (11,180*)	8,400 (9,250*)	7,250* (7,250*)
-10	non supported		(14,240)	(10,470)	(8,200)	(6,670)	(5,570)	(4,750)	
	4-pt. supported		15,060* (15,060*)	18,390* (18,390*)	14,530 (14,970*)	11,730 (12,330*)	9,780 (10,130*)	8,100* (8,100*)	

## Recommended Attachments\*

Lift hook	22,046 lbs
Terex® Fuchs Cactus Grab 0.78 yd <sup>3</sup>	Open or half-closed tines
Terex® Fuchs Magnetic Plate MP 1250	Diameter = 49.2 in with magnet system 20 kW
Clamshell Grab 1.31 yd <sup>3</sup>	Loose goods density up to 1,348 lb/yd <sup>3</sup>

\* May vary depending on material being handled and operating conditions.

Capacity values are stated in lbs. The pump pressure is 5,221 psi. The values, in accordance with ISO 10567, amount to 75% of the static tipping load or 87% of the hydraulic lifting force (marked\*). They apply to slewing operations through 360° on a firm and level surface.

Values in parenthesis apply to the longitudinal direction of the undercarriage. "Non-supported" values only apply when the load is hoisted above the front or rear axle.

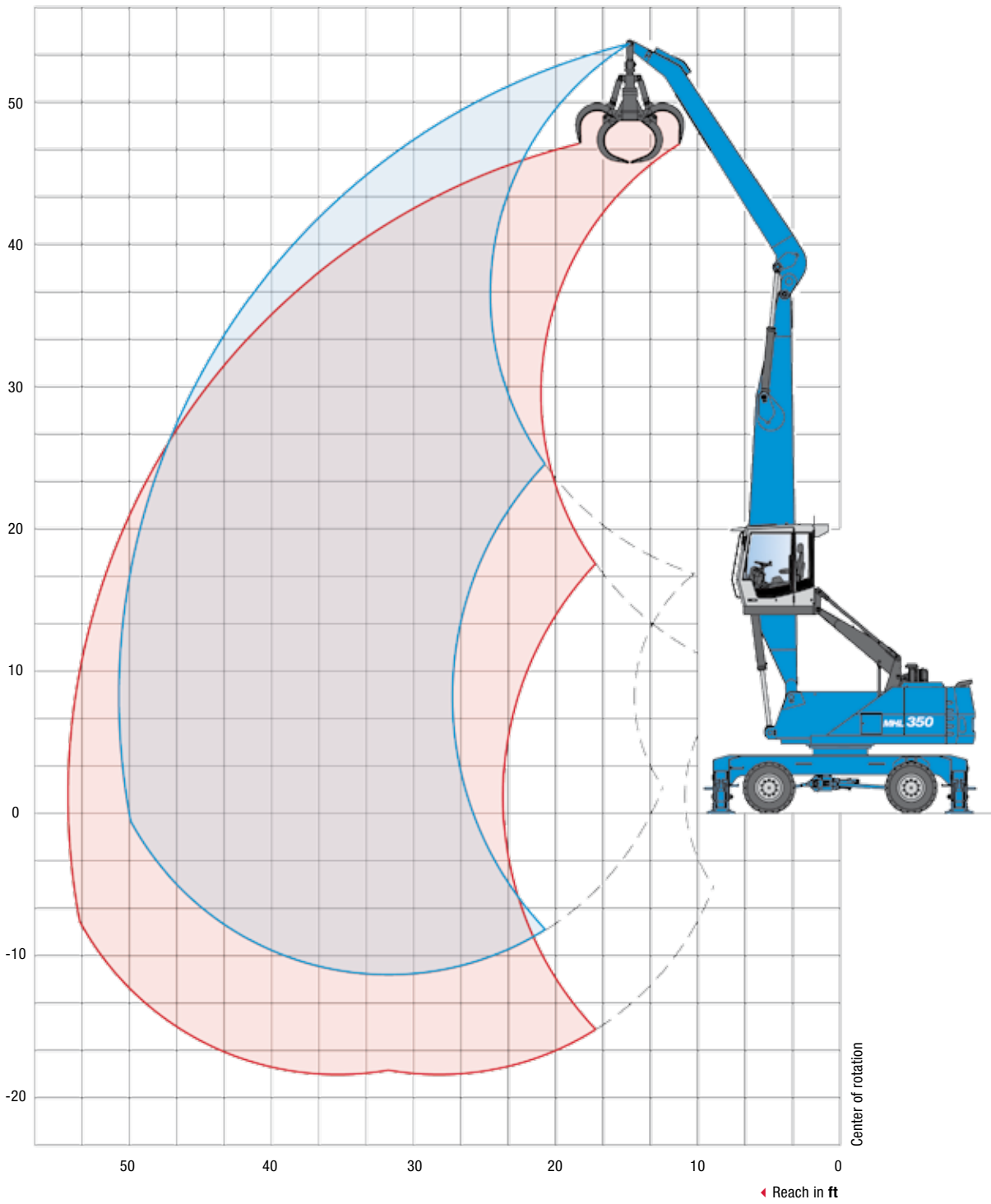
The weight of the attached hoisting equipment (grab, magnet, coupler, lift hook etc.) must be deducted from the capacity values. In accordance with CE guidelines, hose-rupture protection valves on the lift cylinders and an overload warning device are required for crane operations.

# WORKS FOR YOU.™

# WORKING RANGES/LIFTING CAPACITIES

**Reach 49.2 ft**

**Work equipment:**  
Box-type boom 27.9 ft  
Stick 20.3 ft  
Cactus grab



HEIGHT ft	UNDERCARRIAGE STABILIZERS	REACH ft							
		15	20	25	30	35	40	45	50
50	non supported		(12,110*)	(8,280*)					
	4-pt. supported		12,110* (12,110*)	8,280* (8,280*)					
45	non supported			(12,590*)	(9,590*)				
	4-pt. supported			12,590* (12,590*)	9,590* (9,590*)				
40	non supported			(14,520*)	(12,110)	(9,150)			
	4-pt. supported			14,520* (14,520*)	12,630* (12,630*)	9,530* (9,530*)			
35	non supported			(15,940*)	(12,170)	(9,270)	(7,170)		
	4-pt. supported			15,940* (15,940*)	14,610* (14,610*)	12,360* (12,360*)	8,520* (8,520*)		
30	non supported			(16,290)	(12,020)	(9,200)	(7,190)	(5,650)	
	4-pt. supported			16,950* (16,950*)	14,780* (14,780*)	13,130* (13,130*)	11,410* (11,410*)	5,900* (5,900*)	
25	non supported			(15,770)	(11,670)	(8,980)	(7,080)	(5,650)	
	4-pt. supported			17,670* (17,670*)	15,200* (15,200*)	13,350* (13,350*)	11,380 (11,870*)	9,060* (9,060*)	
20	non supported		(21,400)	(14,960)	(11,160)	(8,660)	(6,880)	(5,550)	
	4-pt. supported		23,160* (23,160*)	18,740* (18,740*)	15,800* (15,800*)	13,670* (13,670*)	11,170 (12,010*)	9,190 (10,600*)	
15	non supported	(30,660)	(19,530)	(13,910)	(10,520)	(8,250)	(6,630)	(5,410)	(4,440)
	4-pt. supported	36,010* (36,010*)	25,560* (25,560*)	19,980* (19,980*)	16,460* (16,460*)	13,430 (14,000*)	10,900 (12,140*)	9,030 (10,580*)	6,450* (6,450*)
10	non supported	(14,190*)	(17,470)	(12,790)	(9,850)	(7,830)	(6,360)	(5,240)	(4,370)
	4-pt. supported	14,190* (14,190*)	27,610* (27,610*)	21,010* (21,010*)	16,320 (16,990*)	12,970 (14,240*)	10,610 (12,180*)	8,860 (10,460*)	7,520* (7,520*)
5	non supported		(15,840)	(11,820)	(9,240)	(7,430)	(6,100)	(5,090)	(4,310)
	4-pt. supported		22,860* (22,860*)	20,380 (21,430*)	15,650 (17,180*)	12,540 (14,250*)	10,340 (12,030*)	8,700 (10,170*)	7,460* (7,460*)
0	non supported		(14,930)	(11,150)	(8,770)	(7,120)	(5,900)	(4,970)	(4,280)
	4-pt. supported		15,510* (15,510*)	19,610 (20,930*)	15,130 (16,830*)	12,200 (13,880*)	10,120 (11,590*)	8,580 (9,580*)	6,720* (6,720*)
-5	non supported		(14,450*)	(10,780)	(8,480)	(6,910)	(5,770)	(4,910)	
	4-pt. supported		14,450* (14,450*)	19,210* (19,210*)	14,820 (15,780*)	11,970 (13,000*)	9,980 (10,710*)	8,510 (8,510*)	
-10	non supported			(10,680)	(8,370)	(6,830)			
	4-pt. supported			16,810* (16,810*)	13,930* (13,930*)	11,460* (11,460*)			

## Recommended Attachments\*

Lift hook	22,046 lbs
Terex® Fuchs Cactus Grab 0.78 yd <sup>3</sup>	Open or half-closed tines
Terex® Fuchs Cactus Grab 1.0 yd <sup>3</sup>	Open or half-closed tines
Terex® Fuchs Magnetic Plate MP 1250	Diameter = 49.2 in with magnet system 20 kW
Clamshell Grab 1.31 yd <sup>3</sup>	Loose goods density up to 2,697 lb/yd <sup>3</sup>
Clamshell Grab 2.1 yd <sup>3</sup>	Loose goods density up to 1,348 lb/yd <sup>3</sup>

\* May vary depending on material being handled and operating conditions.

Capacity values are stated in lbs. The pump pressure is 5,221 psi. The values, in accordance with ISO 10567, amount to 75% of the static tipping load or 87% of the hydraulic lifting force (marked\*). They apply to slewing operations through 360° on a firm and level surface.

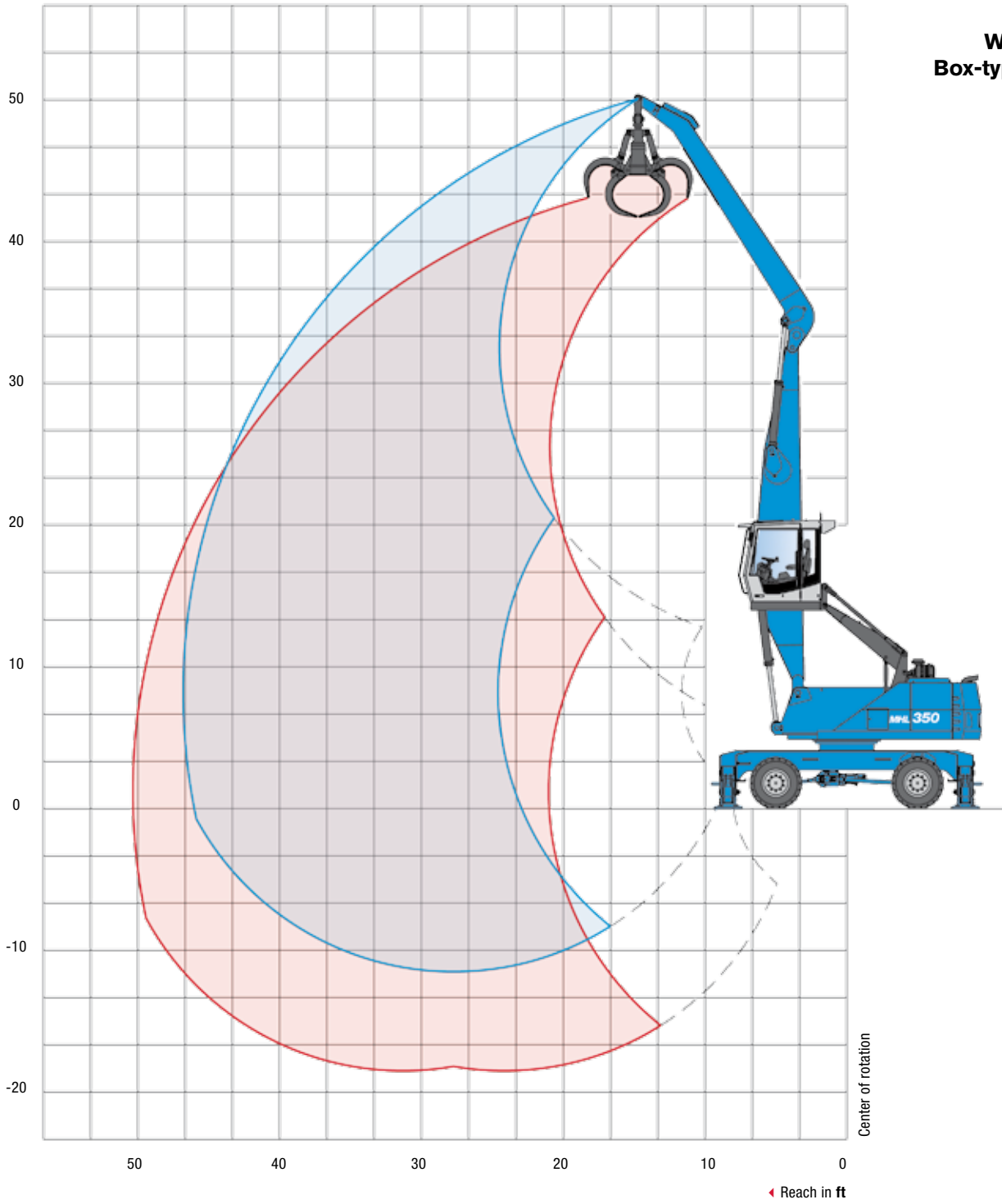
Values in parenthesis apply to the longitudinal direction of the undercarriage. "Non-supported" values only apply when the load is hoisted above the front or rear axle.

The weight of the attached hoisting equipment (grab, magnet, coupler, lift hook etc.) must be deducted from the capacity values. In accordance with CE guidelines, hose-rupture protection valves on the lift cylinders and an overload warning device are required for crane operations.

# WORKING RANGES/LIFTING CAPACITIES

**Reach 45.9 ft**

**Work equipment:**  
Box-type boom 24.0 ft  
Stick 20.3 ft  
Cactus grab



HEIGHT ft	UNDERCARRIAGE STABILIZERS	REACH ft						
		15	20	25	30	35	40	45
45	non supported			(8,960*)				
	4-pt. supported			8,960* (8,960*)				
40	non supported			(12,900*)	(9,600*)			
	4-pt. supported			12,900* (12,900*)	9,600* (9,600*)			
35	non supported			(14,770*)	(12,210)	(8,960*)		
	4-pt. supported			14,770* (14,770*)	12,660* (12,660*)	8,960* (8,960*)		
30	non supported			(16,200*)	(12,220)	(9,380)	(6,910*)	
	4-pt. supported			16,200* (16,200*)	14,710* (14,710*)	11,940* (11,940*)	6,910* (6,910*)	
25	non supported			(16,230)	(12,050)	(9,300)	(7,340)	
	4-pt. supported			17,380* (17,380*)	15,510* (15,510*)	13,990* (13,990*)	10,090* (10,090*)	
20	non supported			(15,700)	(11,710)	(9,100)	(7,240)	(5,540*)
	4-pt. supported			18,450* (18,450*)	16,110* (16,110*)	14,290* (14,290*)	11,510 (12,410*)	6,280* (6,280*)
15	non supported	(24,490*)	(12,180)	(14,930)	(11,240)	(8,810)	(7,080)	(5,780)
	4-pt. supported	24,490* (24,490*)	24,380* (24,380*)	19,910* (19,910*)	16,900* (16,900*)	13,970 (14,680*)	11,330 (12,900*)	8,740* (8,740*)
10	non supported	(30,280)	(19,510)	(14,030)	(10,700)	(8,480)	(6,880)	(5,690)
	4-pt. supported	38,810* (38,810*)	27,410* (27,410*)	21,430* (21,430*)	17,200 (17,680*)	13,620 (15,040*)	11,130 (12,960*)	9,300 (10,150*)
5	non supported	(20,800*)	(17,940)	(13,150)	(10,180)	(8,150)	(6,690)	(5,600)
	4-pt. supported	20,800* (20,800*)	29,540* (29,540*)	21,800 (22,500*)	16,620 (18,180*)	13,270 (15,180*)	10,920 (12,820*)	9,200 (10,550*)
0	non supported	(13,060*)	(16,860)	(12,480)	(9,750)	(7,890)	(6,540)	(5,540)
	4-pt. supported	13,060* (13,060*)	29,570* (29,570*)	21,040 (22,670*)	16,150 (18,130*)	12,980 (14,910*)	10,760 (12,310*)	9,140 (9,620*)
-5	non supported	(12,710*)	(16,320)	(12,070)	(9,470)	(7,710)	(6,450)	
	4-pt. supported	12,710* (12,710*)	25,910* (25,910*)	20,580 (21,630*)	15,840 (17,280*)	12,790 (14,020*)	10,660 (11,200*)	
-10	non supported		(16,190)	(11,920)	(9,360)	(7,650)		
	4-pt. supported		23,850* (23,850*)	19,180* (19,180*)	15,370* (15,370*)	12,210* (12,210*)		

## Recommended Attachments

Lift hook	22,046 lbs
Terex® Fuchs Cactus Grab 0.78 yd <sup>3</sup>	Open or half-closed tines
Terex® Fuchs Cactus Grab 1.0 yd <sup>3</sup>	Open or half-closed tines
Terex® Fuchs Magnetic Plate MP 1250	Diameter = 49.2 in with magnet system 20 kW
Clamshell Grab 1.8 yd <sup>3</sup>	Loose goods density up to 2,697 lb/yd <sup>3</sup>
Clamshell Grab 2.6 yd <sup>3</sup>	Loose goods density up to 1,348 lb/yd <sup>3</sup>

\* May vary depending on material being handled and operating conditions.

Capacity values are stated in lbs. The pump pressure is 5,221 psi. The values, in accordance with ISO 10567, amount to 75% of the static tipping load or 87% of the hydraulic lifting force (marked\*). They apply to slewing operations through 360° on a firm and level surface.

Values in parenthesis apply to the longitudinal direction of the undercarriage. "Non-supported" values only apply when the load is hoisted above the front or rear axle.

The weight of the attached hoisting equipment (grab, magnet, coupler, lift hook etc.) must be deducted from the capacity values. In accordance with CE guidelines, hose-rupture protection valves on the lift cylinders and an overload warning device are required for crane operations.

**terex.com**

Effective Date: April 2010. Product specifications and prices are subject to change without notice or obligation. The photographs and/or drawings in this document are for illustrative purposes only. Refer to the appropriate Operator's Manual for instructions on the proper use of this equipment. Failure to follow the appropriate Operator's Manual when using our equipment or to otherwise act irresponsibly may result in serious injury or death. The only warranty applicable to our equipment is the standard written warranty applicable to the particular product and sale and Terex makes no other warranty, express or implied. Products and services listed may be trademarks, service marks, or trade names of Terex Corporation and/or its subsidiaries in the USA and other countries. All rights are reserved. Terex is a registered trademark of Terex Corporation in the USA and many other countries. © 2010 Terex Corporation.

8800 Rostin Road, Southaven, MS 38671 USA  
1.888.90.TEREX (83739)



**WORKS FOR YOU.™**

MHL350D 0410 PN 127529